



Website Design
Web Applications
Database Development
Search Engine Optimization
Content Management Systems
Search Marketing
Site Testing
Hosting

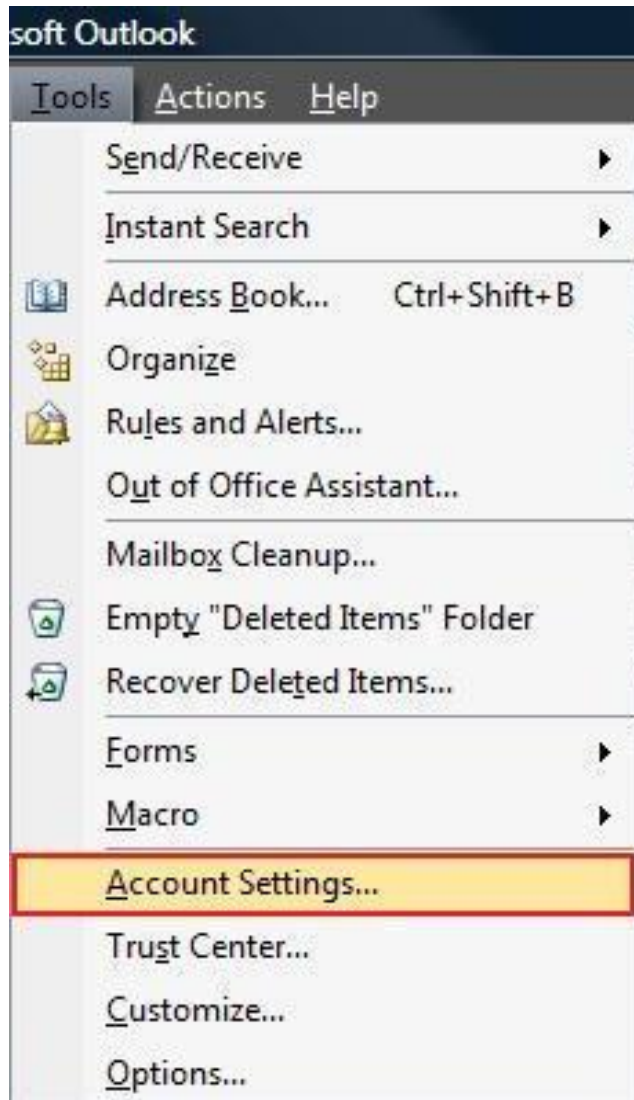
SMTP Authentication Tutorial

Outlook 2007

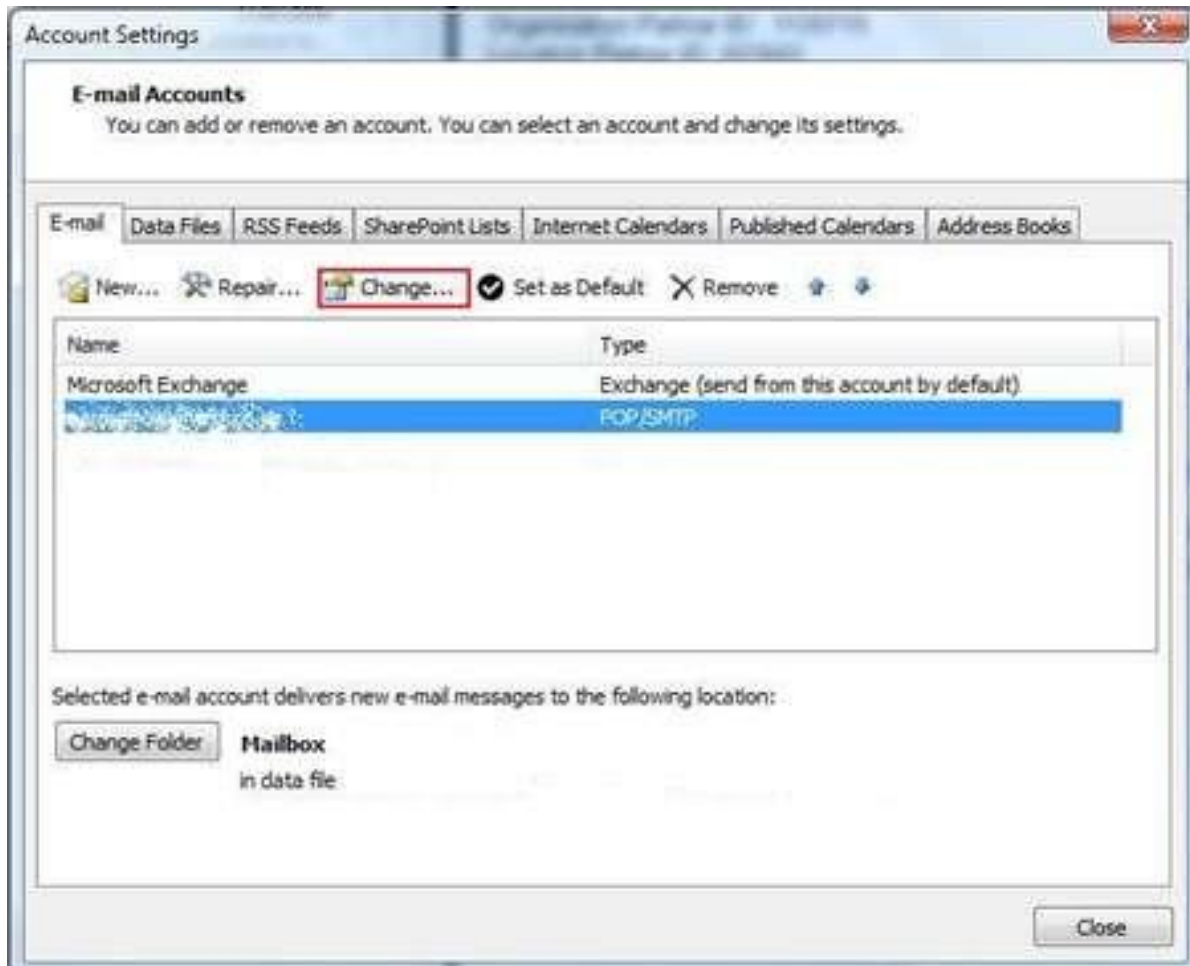
This document is intended to assist in configuring SMTP Authentication for Outlook 2007.



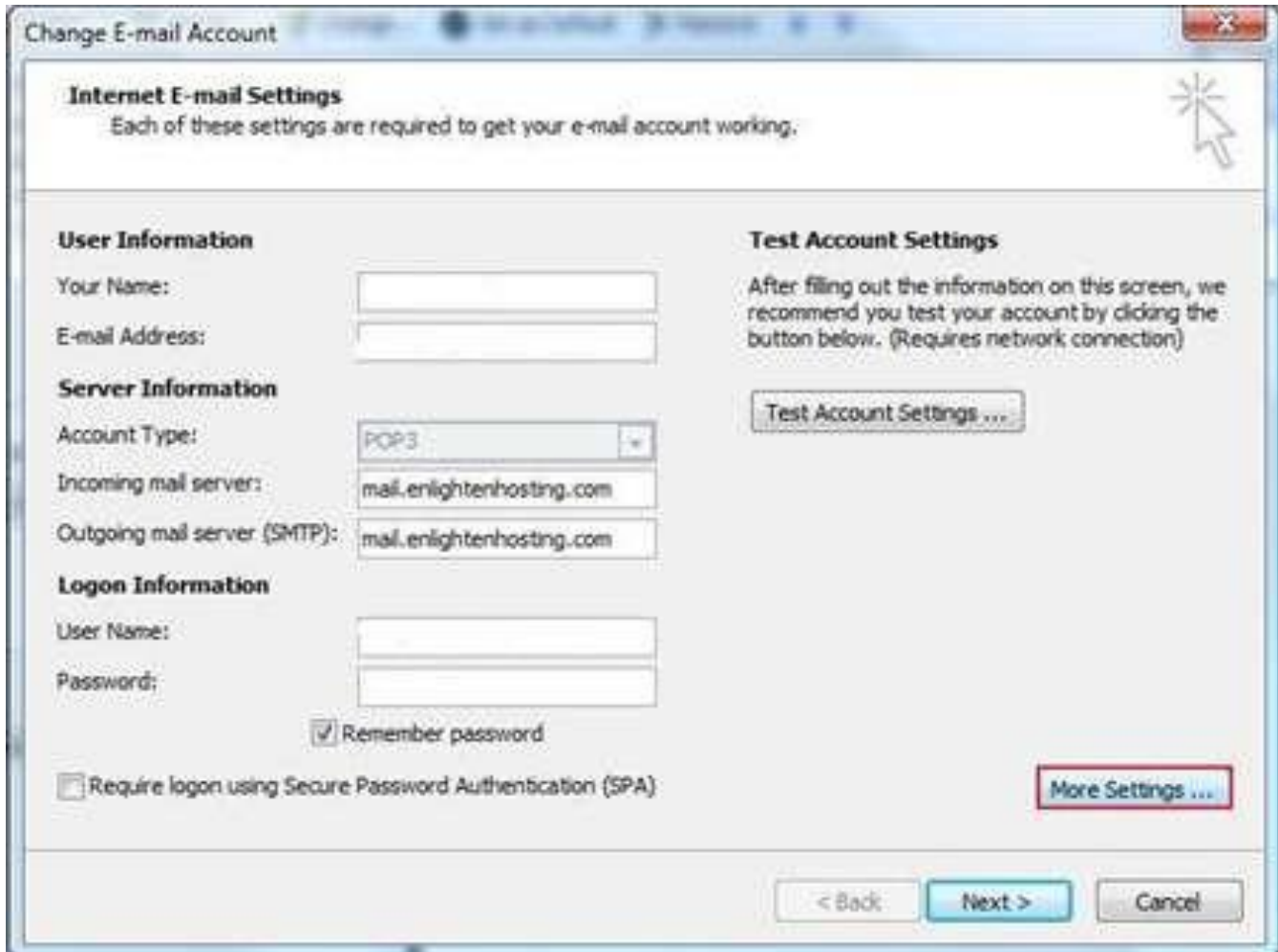
1. Select the '**Tools**' menu and click '**Account settings**'



2. Select the account on which you wish to enable authentication and click **'Change'**



3. Select the **'More Settings...'** button



Change E-mail Account

Internet E-mail Settings
Each of these settings are required to get your e-mail account working.

User Information

Your Name:

E-mail Address:

Server Information

Account Type:

Incoming mail server:

Outgoing mail server (SMTP):

Logon Information

User Name:

Password:

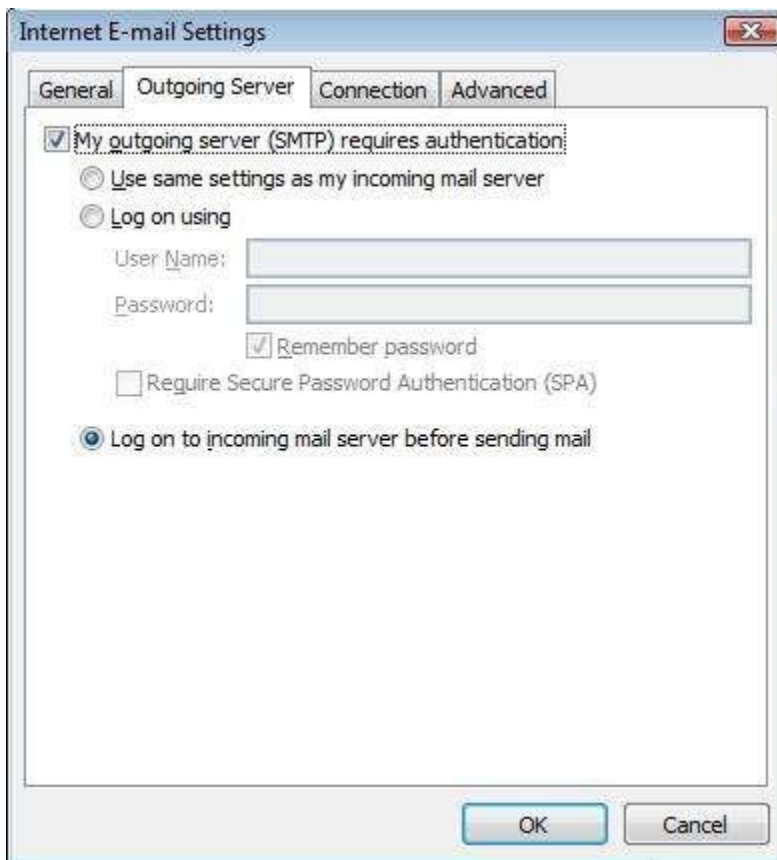
Remember password

Require logon using Secure Password Authentication (SPA)

Test Account Settings

After filling out the information on this screen, we recommend you test your account by clicking the button below. (Requires network connection)

4. Select the '**Outgoing Server**' tab
5. Place a check in the box labeled '**My outgoing server (SMTP) requires authentication**' and the box that's labeled '**Log on to incoming mail server before sending mail**'



6. Click 'OK'
7. Click 'Next'
8. Click 'Finish'